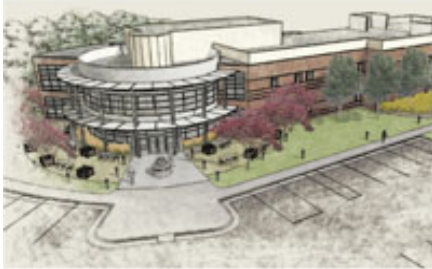


Dedication set for state's first university research park building



The idea for the Innovation Campus was around long before Gov. Mike Rounds turned the first shovel of dirt in September 2006. Now Sept. 4 will mark the dedication of the Innovation Center and Miller Parkway, the initial building projects that made the idea for the 125-acre Innovation Campus a reality.

Even though the building has been operational as a hub of innovative enterprise since last October, the SDSU Growth Partnership board of directors waited until landscaping was in place for formal dedication. Ceremonies for the building and parkway leading to the facility begin at 1 p.m. Friday, east of South Dakota State University off 22nd Avenue.

“We’re really creating a model for others to follow in forming synergistic research opportunities among SDSU, private business and government scientists, researchers and innovators,” said Teresa McKnight, CEO/executive director of the Innovation Campus. “This building represents the springboard for the state’s first research park and countless innovations that will result from it.”

The Innovation Center is the first of potentially 60 buildings on the site next to the largest research university in the state with the largest student-base learning from skilled professors and scientists who take part in worldwide research.

Nine companies or business partners, according to McKnight, are currently housed in the Innovation Center, and construction started on a second building, the 30,000 square-foot, Seed Technology Laboratory to the north, in April. When the seed laboratory opens in July 2010, it will house researchers who will bring together discovery, teaching, outreach and technical service for seed and crop science, technology and biotechnology in one location at South Dakota State University Innovation Campus.

Other development spawned by the Innovation Campus includes Innovation Village, a 125-unit corporate apartment building, to house researchers, scientists, and undergraduate and graduate students who want to be close to the SDSU campus and the SDSU Innovation Campus.

“In addition, negotiations are under way for buildings three and four on the Innovation Campus with construction starting as early as October,” said McKnight.

The dedication ceremonies will include a flag raising ceremony and remarks from national, state, regional and local dignitaries. The Growth Partnership board of directors is made up of Brookings city and county, state, Brookings Economic Development Corporation, SDSU Foundation and SDSU representatives.

The public is invited to be part of a ceremony to witness transformation of an idea into a cooperative effort to bring high-tech commerce to the state. For more information, contact McKnight at 605-696-5600 or teresa.mcknight@sdstate.edu. Dedication for the Innovation Center and Miller Parkway is set for Friday, Sept. 4, at 1 p.m.