



# e.connect

Sept. 25, 2006

A weekly publication of University Relations



Submit information to

[Cindy.Rickeman@sdstate.edu](mailto:Cindy.Rickeman@sdstate.edu) or [Dave.Graves@sdstate.edu](mailto:Dave.Graves@sdstate.edu)

deadline 2 p.m. Thursday

## SDSU Growth Partnership breaks ground on state's first research park

At groundbreaking ceremonies Monday for South Dakota's first research park, known as the Innovation Campus at SDSU, Gov. Mike Rounds went a step further than simply turning over a shovelful of sod.

Rounds pledged almost \$3 million over the next three years for the park's Seed Technology Building to establish the 2010 Center of Excellence for Drought Tolerance Biotechnology.

The park itself will be the conduit for research and new ideas to move from land-grant university scientists, industry and entrepreneurs into the regional economy.

The master plan for the 125-acre Innovation Campus at SDSU calls for 19 buildings, with a combined total of more than 1 million square feet of space. The plan includes a long-term private investment of more than \$200 million to complete the build-out of the research park. The master plan also includes space for support facilities, such as a hotel and parking garage, green house facilities, a grain mill and wind turbine research facilities, all in a pastoral setting.

"This is the largest research park conceived for South Dakota, and it is very logical that it would be located at SDSU," said President Peggy Gordon Miller. "SDSU is the state's leading research institution, and this will exponentially expand our ability to move new ideas from the laboratory to our economy." Miller also serves as president of the SDSU Growth Partnership Board of Directors.

The SDSU Growth Partnership is a nonprofit corporation created by SDSU, the SDSU Foundation, the university's research community, the City and County of Brookings, the Brookings Economic Development Corporations and the State of South Dakota. Board members and speakers at the ceremony wielded shovels and overturned the first pieces of sod in the much-anticipated project.

The park will be a home for expanded university research and entrepreneurship, incubation and mentoring



Artist illustration of proposed entrance to the Innovation Campus.

of emerging technologies, and land for expanding business development.

The first structure to be completed will be 30,000 square feet and serve as the flagship building for the park. It will function as an incubation center providing short-term leases to start-up organizations. It will also provide common administrative areas.

Funding sources for the flagship building include \$2.5 million from the Economic Development Administration (an agency of the U.S. Department of Commerce), \$1.5 million from Vision Brookings (a coalition of economic development organizations working to create opportunities for generating new jobs and improving quality of life in Brookings), \$310,000 from the Crop Improvement Association, \$496,000 from a HUD grant and \$500,000 from the State of South Dakota.

Located east of 22nd Avenue and south of the Highway 14 Bypass, the campus will combine pure academic research with commercial applications that bring new products and processes to the marketplace.

## IN CASE YOU MISSED IT

The following items appeared in full in a previous e.connect. To access the full story, refer to the e.connect issue and page noted.

### **Ag Heritage Museum opens new pictorial exhibit**

showing its own unique history (Sept. 18, page 1)

**Native American Media Symposium** set for Oct. 6-7, Performing Arts Center. Info: 688-6511 (Sept. 18, page 2)

**Donate used cell phones** or empty laser/inkjet printer cartridges to the preschool. (Sept. 18, page 3)

**Walker to perform faculty piano recital** at 7:30 p.m. Sept. 28, Peterson Recital Hall. (Sept. 18, page 3)

**Wildlife personnel present** in New York during annual American Fisheries Society meeting (Sept. 18, page 3)

**University Lutheran Center** to lead weekly book discussion on Jesus - noon Wednesdays (Sept. 11, page 2)

**New scoop policy** in place at Dairy Bar. No more rentals, scoops can be bought (Sept. 11, page 3)

**Advisors asked to help update form** for student group officers by Oct. 6 (Sept. 11, page 3)

**N.E. Hansen Lecture Series** kicks off Oct. 3 with "Sydney Adventures," noon, Union 153 (Sept. 11, page 3)

**Free tutoring available for students** Call 688-4155 for information (Aug. 28, page 3)

**While you were away** Academic Evaluation and Assessment moved to former Foundation (Aug. 28, page 3)

**Embroidery exhibit** runs thru Sept. 30 at Art Museum, with reception Sept. 8, 4-7:30 p.m. (July 31, page 3)

**Career Service scholarships** available to staff, dependents (May 15, page 4)

**Price climbs for liquid nitrogen** due to supplier price increases (May 1, page 4)

**Price increase for ethanol sales** on campus. Effective April 10. (April 17, page 4)

**Art Museum has new web site.** <http://www.southdakotaartmuseum.com> (April 17, page 4)

### **Breaking the Silence to be shown Oct. 3**

The next movie in the Clarence Denton Documentary Film Series, hosted by the South Dakota Art Museum is "Breaking the Silence: Truth and Lies in the War on Terror" at 7 p.m. Tuesday, Oct. 3, at the Museum.

The 52-minute film was created in 2003, is directed by Steve Connelly and John Pilger. It is about award-winning journalist John Pilger, who investigates the discrepancies between American and British claims for the war on terror and the facts on the ground as he finds them in Afghanistan and Washington, D.C.

The event is free and open to the public.

## SPECIAL EVENTS

### **Service-learning forums begin**

A series of monthly forums on the Service-Learning Initiative begins this Thursday, Sept. 28, in the Black Hills Room of the Student Union.

Elizabeth Tolman, associate professor in the Department of Communication Studies and Theatre, will present "Enhancing the Reflection Component" from 3 p.m. to 4 p.m.

"Given the importance of critical reflection in service-learning, Dr. Tolman's seminar will serve as a most appropriate commencement for the upcoming series of Service-Learning Faculty Forums," said organizer John Anderson, the service-learning consultant in the Office for Diversity Enhancement, which is sponsoring the forums with the Social Responsibility Task Force.

He said, "The forums provide a venue for academicians to discuss service-learning pedagogy and collaborate in the scholarship of engagement."

Info: John P. Anderson, 688-6897, or [John.Anderson@sdstate.edu](mailto:John.Anderson@sdstate.edu).

### **CAP Center open house Oct. 16**

In observance of National Tutoring Week Oct. 9-13, the CAP Center Tutoring Program will host various programs to promote tutoring awareness and to reward tutors for their work and dedication to academic success.

The celebration will wrap up with an open house from 3 p.m. to 4:30 p.m. Monday, Oct. 16, with a brief award ceremony at 3:30 p.m. in the College of General Studies in Medary Commons.

The CAP Center provides free tutoring to SDSU students in select courses. For more information about the tutoring program, visit <http://careercenter.sdstate.edu/tutoring/>.

Info: Jody Owen, instructor/tutoring coordinator, College of General Studies, 688-4153.

### **Festival of Cultures looking for volunteers**

The campus community is invited to be part of the Festival of Cultures March 23, 2007, by reserving a food or display booth, representing your culture, organization or country through dance, singing, special arts or activities, or by volunteering your services.

The event, produced by the Office of Diversity Enhancement, is a living exhibition of musicians, muralists, craftspeople, storytellers, cooks and occupational specialists.

Next year's program will include a cultural display and bazaar, language competition, international speakers, a flag parade and other programs and activities.

To reserve a booth, provide entertainment or volunteer your services, call Hugues Waka Ngatchou, Festival coordinator, at 688-6361.



## GENERAL ANNOUNCEMENTS

### Peterson named interim dean



Denise Peterson

Denise Peterson, an associate professor in Education and Counseling, was named interim assistant to the dean for the College of General Studies on Sept. 5.

She fills a position that had been held by Keith Corbett, who was appointed interim dean this summer. Both appointments are for two years.

Although Peterson will be leaving behind her duties in the College of Education, this fall she is still teaching Principles and Practices of Post-Secondary Education, and Instructional Technology and Design.

In her new job, Peterson will assist Corbett in day-to-day operations as well as in various projects, including the examination of program assessment, enhancing service, encouraging staff members to pursue scholarly activity and proposal presentations.

Peterson was appointed to the SDSU faculty in August 1998, teaching in the Department of Educational Administration.

She began her teaching career at Northwest Missouri State in Maryville in 1988. Peterson taught at the University of South Dakota from 1990 to 1997 before spending one year as a distance education specialist at SDSU.

### Identify students for Goldwater opportunity

Faculty members are encouraged to remind sophomores and juniors of the Barry M. Goldwater Scholarship.

It is open to students interested in careers in math, the natural sciences or engineering, and who are in the top fourth of their class with at least a B average. The award covers eligible expenses up to \$7,500 per year and is renewable for juniors. Students must be nominated by their institution.

Applications are due Jan. 19, 2007. For more information, contact Oren Quist in Crothers Engineering Hall 314, 688-5428.



## UNIVERSITY TRIVIA

For the answer, look on Page 5.

Sept. 22, 1962, marked the opening of Coughlin-Alumni Stadium. How did the stadium gain its name?



## SPECIAL EVENT



National Public Radio Chief Executive Officer Kevin Klose

### NPR chief to assess broadcasting's impact on world affairs

"Broadcasting's Impact on International Affairs" will be assessed by Kevin Klose, president and chief executive officer of National Public Radio, in a free lecture at 7 p.m. Wednesday, **Oct. 11**, in the Performing Arts Center Larson Memorial Concert Hall.

Klose has served as an editor as well as a national and foreign correspondent with *The Washington Post*. From 1977-1981, he was the Post's bureau chief in Moscow.

The award-winning author and international broadcasting executive joined NPR in 1998. Prior to that, he served as director of U.S. international broadcasting, overseeing the United States government's global radio and news services and as president of Radio Free Europe/Radio Liberty broadcasting to Central Europe and the former Soviet Union.

In July 2006, the Corporation for Public Broadcasting honored Klose with the Edward R. Murrow Award, which recognizes individuals who foster radio's quality and service and shape its direction.

An informal reception will follow in the atrium of the PAC.

The program is sponsored by the Harding Distinguished Lecture Series committee and the South Dakota Council on World Affairs. The council is affiliated with the World Affairs Councils of America, a non-partisan organization, with a mission "to engage grassroots America in world affairs."

For more information, call Harriet Swedlund at 688-5416.



## POSITION ANNOUNCEMENTS

### TRANSITION TO NEW EMPLOYMENT PROCESS:

The Board of Regents has implemented PeopleAdmin for SDSU and all the institutions within the BOR system.

All vacancies are announced on the shared Online Employment System and applications will be accepted electronically as of that date.

To search job postings, review application procedures and obtain more information concerning the new Online Employment System, visit <http://jobs.sdstate.edu> or call Human Resources at 688-4128.

SDSU is an AA/EEO employer.

### Career Service

- **CUSTODIAL WORKER - PHYSICAL PLANT.** Deadline: **Open & continuous.**
- **CUSTODIAL WORKER—UNIVERSITY HOUSING.** Deadline: **Open and continuous.**
- **BUILDING MAINTENANCE WORKER—PHYSICAL PLANT GENERAL SERVICES.** Deadline: **Open until filled.**
- **BUILDING MAINTENANCE WORKER or SENIOR BUILDING MAINTENANCE WORKER—PHYSICAL PLANT PLUMBING SHOP.** Deadline: **Open until filled.**
- **COMMUNICATIONS MEDIA SPECIALIST—EPSCOR.** Deadline: **Open until filled.**
- **CUSTODIAL SERVICES SUPERVISOR I—PHYSICAL PLANT.** Deadline: **Open until filled.** [0988]
- **FABRICATION TECHNICIAN — ELECTRICAL ENGINEERING.** Deadline: **Open until filled.**
- **HEAT PLANT OPERATOR/TECHNICIAN—PHYSICAL PLANT HEATING PLANT.** Deadline: **Open until filled.**
- **NURSING FACULTY.** Deadline: **Open until filled.**
- **PHARMACIST I—STUDENT HEALTH & COUNSELING/COLLEGE OF PHARMACY.** Deadline: **Open until filled.** [0262]
- **SENIOR BUILDING MAINTENANCE WORKER—PHYSICAL PLANT GENERAL SERVICES.** Deadline: **Open until filled.**
- **TEMPORARY SECRETARY POOL — HUMAN RESOURCES.** Deadline: **Open until filled.**
- **CUSTODIAL CREW LEADER—THE UNION.** Deadline: **Sept. 26.** [1244]

- **CUSTODIAL CREW LEADER—PHYSICAL PLANT.** Deadline: **Sept. 26.** [1005]
- **PAYROLL ASSISTANT—SHARED PAYROLL SERVICES CENTER.** Deadline: **Sept. 26.** [1275]
- **COMMUNICATION NETWORK ANALYST—UNIVERSITY NETWORKING SYSTEMS & SERVICES.** Deadline: **Sept. 27.** [1056]
- **TECHNICAL ASSISTANT PROVIDER—SOUTH DAKOTA LOCAL TRANSPORTATION ASSISTANCE PROVIDER.** Deadline: **Sept. 29.** [1172]
- **SECRETARY — HUMAN DEVELOPMENT, CONSUMER & FAMILY SCIENCES.** Deadline: **Sept. 29.**
- **SECRETARY/AVIATION DISPATCHER—TEACHER EDUCATION/AVIATION PROGRAM.** Deadline: **Oct. 1.**
- **SECRETARY — ADMISSIONS.** Deadline: **Oct. 1.**
- **POLICY/DATA ANALYST — GRANTS ADMINISTRATION.** Deadline: **Oct. 1.**
- **BUILDING MAINTENANCE WORKER or SENIOR BUILDING MAINTENANCE WORKER — PHYSICAL PLANT, Plumbing Shop.** Deadline: **Oct. 3.**
- **SENIOR SECRETARY — UNDERGRADUATE NURSING. Sioux Falls.** Deadline: **Oct. 9.**

### Faculty/Exempt

#### FOR MORE INFORMATION:

More information on the following jobs can be found at <http://jobs.sdstate.edu> or (YourFuture.sdbor.edu).

- **ASSISTANT PROFESSOR — AMBULATORY CARE PHARMACY PRACTICE, COLLEGE OF PHARMACY.** Deadline: **Open until filled.**
- **ASSISTANT PROFESSOR OF BIOINFORMATICS — MATHEMATICS & STATISTICS.** Deadline: **Open until filled..**
- **DEAN OF LIBRARIES.** Deadline: **Open until filled.**
- **DISTRICT EXTENSION SUPERVISOR (south).** Deadline: **Open until filled.**
- **EXTENSION EDUCATOR—FAMILY AND CONSUMER SCIENCES. Location: Elk Point.** Deadline: **Open until filled.**
- **EXTENSION EDUCATOR—LIVESTOCK. Location: Grant County.** Deadline: **Open until filled.**
- **EXTENSION EDUCATOR—MARKETING/FARM BUSINESS MANAGEMENT Location:Union County.** Deadline: **Open until filled.**

## Faculty/Exempt

- **AIRCRAFT MECHANIC — AVIATION PROGRAM (COLLEGE OF EDUCATION AND COUNSELING).** Deadline: Sept. 26.
- **ASSISTANT PROFESSOR – DESIGNER/ARTIST: VISUAL COMMUNICATIONS/NEW MEDIA.** Deadline: Oct. 6.
- **ASSISTANT PROFESSOR — RURAL SOCIOLOGY,** Deadline: Oct. 15.
- **LECTURER/INSTRUCTOR — ENGINEERING TECHNOLOGY & MANAGEMENT.** (part-time). Deadline: Oct. 31.
- **ASSISTANT PROFESSOR — WILDLIFE AND FISHERIES SCIENCE.** Deadline: Dec. 1.
- **RANGE MANAGEMENT OUTREACH COORDINATOR — ANIMAL AND RANGE SCIENCES.** Deadline: Dec. 1.
- **ASSISTANT PROFESSOR — MATHEMATICS AND STATISTICS.** Deadline: Dec. 1.



## SPECIAL EVENT

### Power of one begins with you

The Family Resource Network, Brookings County Extension, and Division of Child Care Services, are sponsoring "The Power of One Begins with You." This free 3 hour workshop will be Tuesday, October 10, 2006 from 6:30pm-9:30pm. The workshop will be located at the Brookings County Extension Center (east side of the Swiftel Center).

Deb Butman Perkins, Licensed Professional Counselor-Mental Health and Registered Play Therapist Supervisor, will be sharing information on understanding the basics of social emotional development, strategies to meet the individual needs of children and working with challenging behaviors.

Pre-registration is required. Call 605-688-5730 or 1-800-354-8238 to register.



## UNIVERSITY TRIVIA

Sept. 22, 1962, marked the opening of Coughlin-Alumni Stadium. How did the stadium gain its name?

**Answer:** A \$50,000 donation by Charles Coughlin, namesake of the Coughlin Campanile, was supplemented by \$250,000 given by alumni, students, and friends of the college.

P.S. Arkansas State beat the Jacks 9-7. It remains the only time the schools have met.



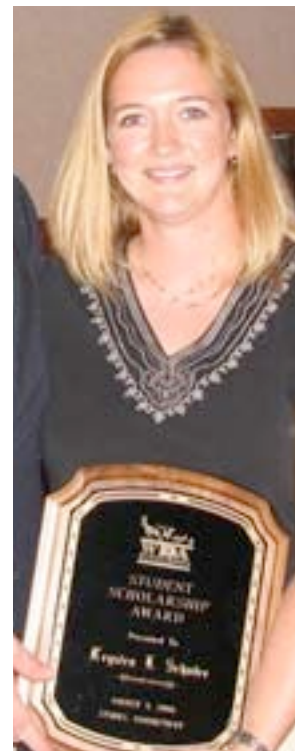
## GENERAL ANNOUNCEMENTS

### Schuler awarded wildlife scholarship

Krysten Schuler, a graduate student in the Department of Wildlife and Fisheries Sciences, was recently recognized by the Wildlife Disease Association.

Schuler, of Bradford, Pa., received the Wildlife Disease Association Scholarship Award at the 55th Annual Meeting of the Wildlife Disease Association at the University Connecticut in Storrs, Aug. 6-10. She received an award plaque and \$2,000 for educational expenses.

Schuler, daughter of Michael and Diane Schuler, will graduate in December with a Ph.D. in biological sciences with a specialization in wildlife and fisheries sciences. She did her dissertation research on monitoring for chronic wasting disease in deer.



Chief Information Technology Office

INSTRUCTIONAL DESIGN SERVICES

### IDS offers 3-hour intro to WebCT

Instructional Design Services is offering WebCT: Classroom Support, a three-hour introduction to WebCT from 1:30 p.m. to 4:30 p.m. Tuesday, Sept. 26. Use <http://ids.sdstate.edu/Training/schedule.cfm> to check the training schedule and register for classes. You can request other classes, suggest alternate scheduling for classes, or arrange for individual training by visiting the web site or calling Instructional Design Services at 688-6312.

### WEEKLY SAFETY TIP



#### Driving In the Rain

You can prevent skids by driving slowly and carefully, especially on curves. Steer and brake with a light touch. When you need to stop or slow, do not brake hard or lock the wheels and risk a skid. Maintain mild pressure on the brake pedal.

For more safety information, go to [www.nsc.org](http://www.nsc.org).



## CALENDAR OF EVENTS

### SEPTEMBER

Tuesday, Sept. 26

- South Dakota Art Museum Guild, museum multi-purpose room, 9:30 a.m. Info: Lisa Atkinson, 688-4279.
- Interview Skills workshop, Student Union Room 262A, noon - 1 p.m. Free. Pre-registration required by 5 p.m. Sept. 25. Info: April Boesch, 688-4425.
- Office of Multicultural Affairs presents the Brazilian music group Forro For All, Jack's Place, Student Union, 7 p.m. Info: Rozhyer Aware - 688-6653.

Wednesday, Sept. 27

- (Repeats on Sept. 28.) "Research Development and Administration at SDSU and General Grantswinship" seminar, Ag Hall 150, 11-11:50 a.m. Info: Ruth Manson, 688-5758.
- ...And Nothing But The Truth (2005), part of the South Dakota Art Museum's Clarence Denton Documentary Film Series, Art Museum Alumni Auditorium, 7 p.m. A 56-minute film dealing with the mainstream media. Info: Lisa Atkinson, 688-4279.
- University Program Council presents Open Mic Night, Jack's Place, Student Union, 8 pm. Info: Brady Mallory, UPC showcase coordinator, 688-6173.

Thursday, Sept. 28

- College of Engineering Job Fair, Volstorff Ballroom, 2-7 p.m. Info: April Boesch - 688-4425.
- University Program Council's Adopt-A-Highway cleanup. Meet at the UPC office in the Union (140D) at 5 p.m. Contact: Amanda Maffett, 688-6173.

Friday, Sept. 29

- South Dakota Art Museum's Surface Design on Textile workshop. Instructor: Lynn Verschoor, art museum multipurpose room, 6-9 p.m. Continues 9 a.m. - 4 p.m. Saturday. Cost: \$20 members, \$40 nonmembers. Info: Lisa Atkinson, 688-4279.

### OCTOBER

Tuesday, Oct. 3

- Resumé Writing/Job Search workshop, Student Union Room 103, 3-4 p.m. Free. Pre-registration required by 5 p.m. Oct. 2. Info: April Boesch, 688-4425.

Thursday, Oct. 5

- Interview Skills workshop, Student Union Room 255, 3-4 p.m. Free. Pre-registration required by 5 p.m. Oct. 4. Info: April Boesch, 688-4425.

**e.connect** is distributed every Monday during the school year by the University Relations Office, Dave Graves and Cindy Rickeman, editors.

**Copy deadline is Thursday, 2 p.m.** If possible, please e-mail copy to [Dave.Graves@sdstate.edu](mailto:Dave.Graves@sdstate.edu) or



## MARKETPLACE

### SDSU Dairy Bar

More than ice cream.  
We offer a variety of  
**sandwiches, pastries,  
pop, juice, coffee.**



Stop by on the way to class or at lunch.

Hours:

Monday - Friday 8 a.m. - 5 p.m.

**SDSU Dairy Bar 688-5420**



The Student Society of Arboriculture is doing **tree work** for any staff/faculty for a fundraising program. For an estimate, contact Todd at (605) 351-9231 or [toddhelling@hotmail.com](mailto:toddhelling@hotmail.com)

### SDSU Career Service Employee Cookbooks

make great shower & wedding gifts!  
Just \$3 each or two for \$5.  
Contact Mary Kidwiler, Ag Hall 156, 688-5133



## 125 years of SDSU history

through hundreds of pictures and text by noted historian and author John Miller. Available for \$35 at the SDSU Bookstore, South Dakota Art Museum gift shop and the Ag Heritage Museum gift shop.